



NOVEMBER 1, 2007

BULLETIN  
BFCTMS-07

**BOTTOM ENTRY, TOP EXIT \*\*\* ONLY \*\*\***

[www.ericksonelectric.com](http://www.ericksonelectric.com)

**400 AMP.  
TO  
800 AMP.**

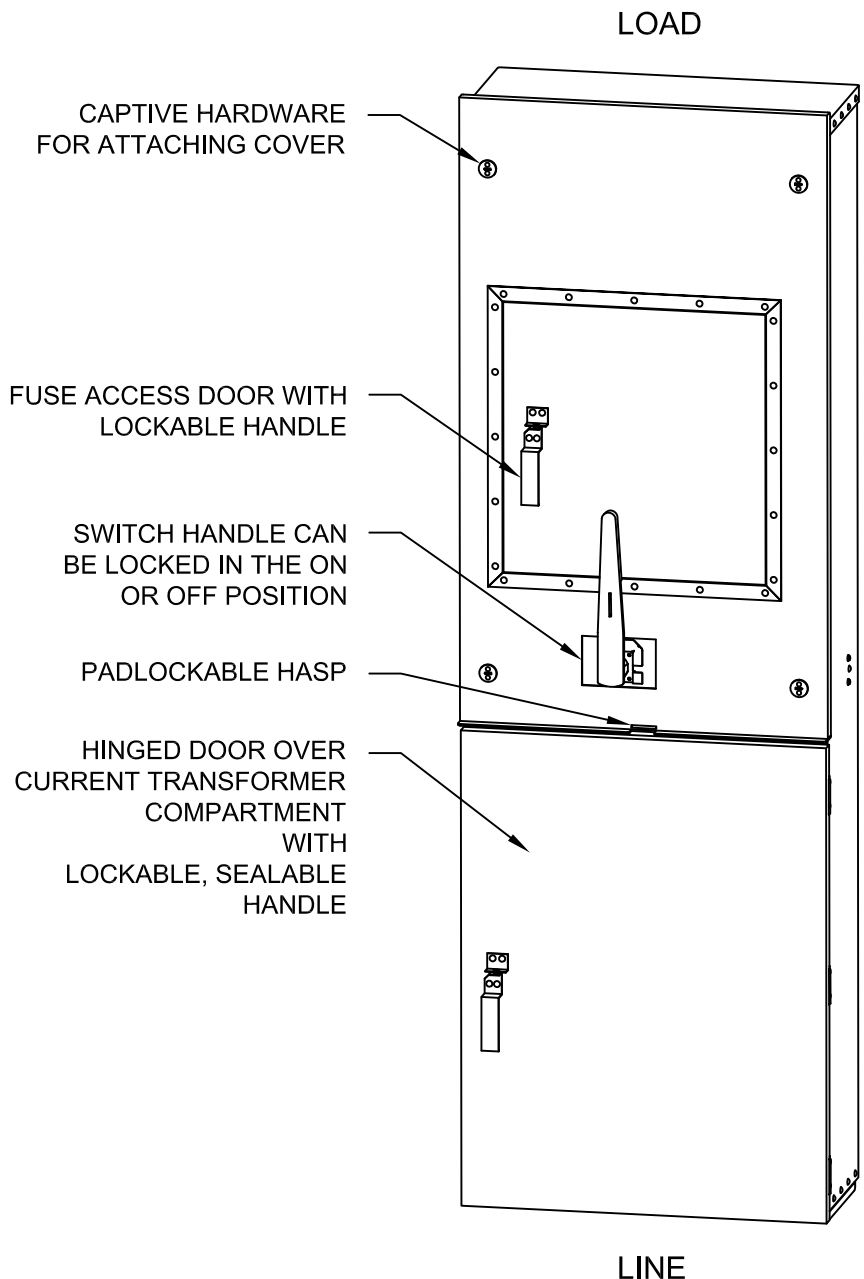
COMBINATION  
METERING  
TRANSFORMER  
SECTION  
AND  
BOLTED  
PRESSURE  
CONTACT  
MAIN SWITCH  
FOR UNDERGROUND  
SERVICE  
CONDUCTORS  
(BOTTOM ENTRY  
TOP EXIT)



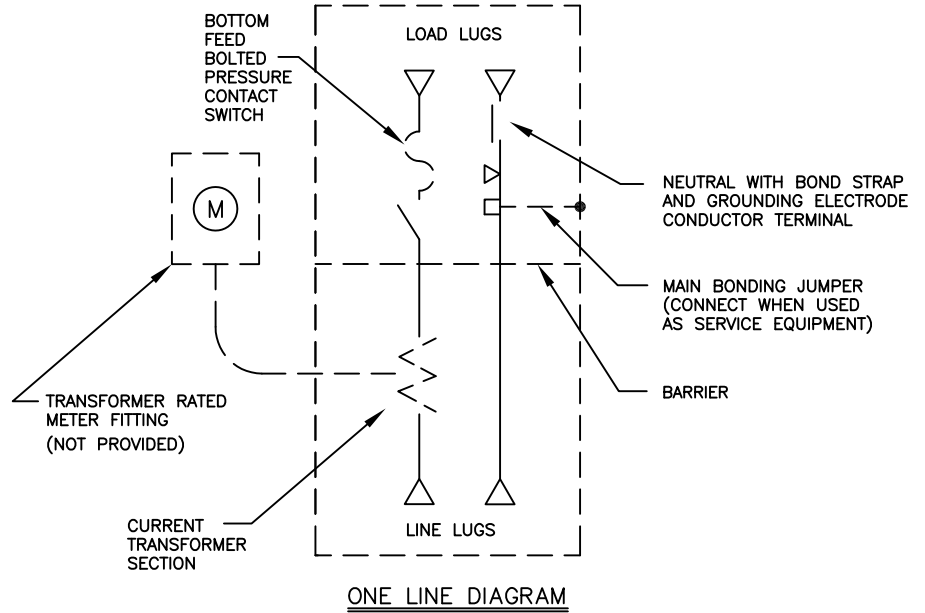
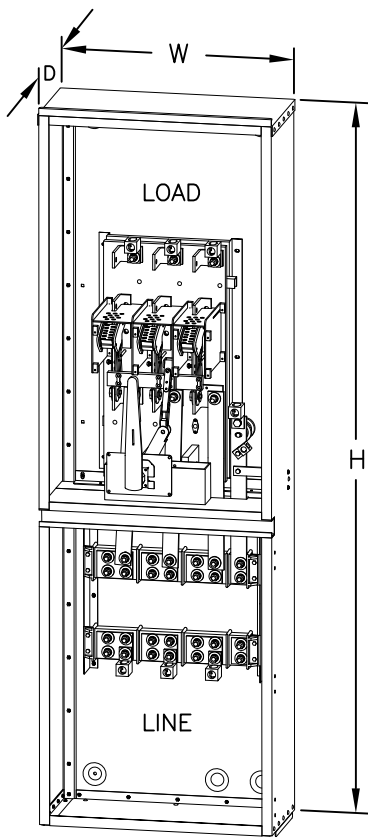
SUITABLE FOR USE  
AS SERVICE EQUIPMENT

200,000 A.I.C  
600 VOLT MAXIMUM

TYPE 3R ENCLOSURE  
FOR INDOOR OR  
OUTDOOR USE.



**ERICKSON ELECTRICAL EQUIPMENT CO.**  
475 BONNIE LANE • ELK GROVE VILLAGE, IL 60007  
TELEPHONE: (847) 640-7701 / 1-800-952-7225  
FAX: (847) 640-0565



| *CATALOG # | AMP RATING | VOLTAGE (MAX.) | FUSE CLASS | MAIN LUGS | H   | W   | D   | SHIPPING WT. ** |
|------------|------------|----------------|------------|-----------|-----|-----|-----|-----------------|
| BFCTMS465N | 400        | 600V           | J          | 1-600 MCM | 81" | 27" | 12" | 260 LBS.        |
| BFCTMS466N | 600        | 600V           | J          | 2-500 MCM | 81" | 27" | 12" | 280 LBS.        |
| BFCTMS467N | 800        | 600V           | L          | 3-600 MCM | 81" | 27" | 12" | 300 LBS.        |

THE ABOVE CATALOG NUMBERS ARE FOR 3Ø 4W, 208Y/120 OR 480Y/277 VOLT SYSTEMS. CONSULT FACTORY FOR 1Ø 3W.

THE SHORT CIRCUIT CURRENT RATING OF THIS EQUIPMENT IS 200,000 A.I.C. WHEN EQUIPPED WITH THE CLASS OF FUSES AS INDICATED ABOVE.

PROVISIONS FOR MOUNTING POTENTIAL TRANSFORMERS FOR 480Y/277V SYSTEMS, IF REQUIRED BY UTILITY COMPANY.

**ERICKSON ELECTRICAL EQUIPMENT CO.**  
 475 BONNIE LANE • ELK GROVE VILLAGE, IL 60007  
 TELEPHONE: (847) 640-7701 / 1-800-952-7225  
 FAX: (847) 640-0565